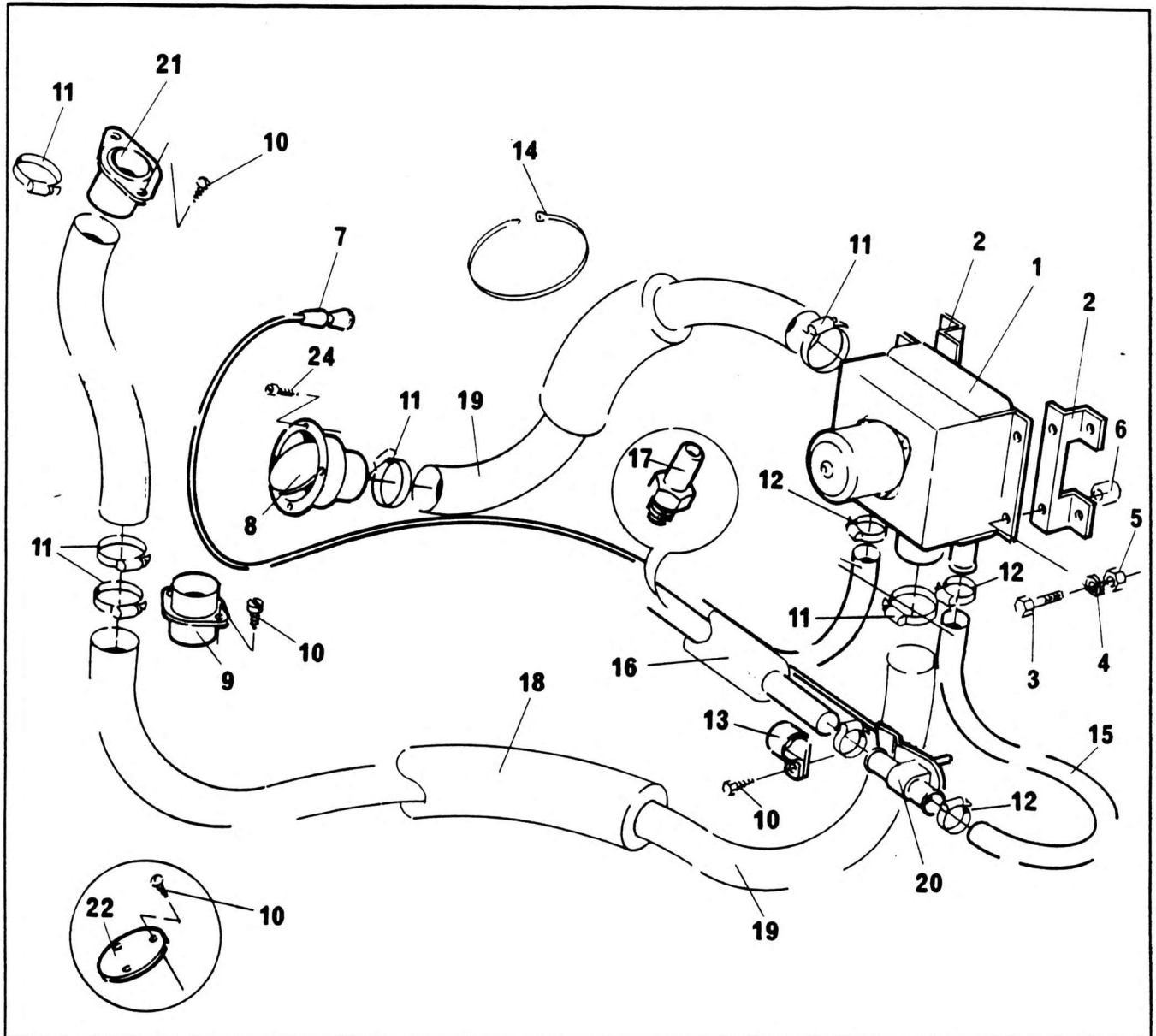


HEATER INSTALL WATER TURNTABLE CAB



NO.	PART NO.	QTY.	DESCRIPTION	NO.	PART NO.	QTY.	DESCRIPTION
1 +	7-515-990115	1	Cab Heater/Demister	17	7-013-990135	2	Adaptor
2	6-705-996480	2	Plate Mounting	18	7-543-990321	1	Hose Insulation 54mm x 200cm
3	7-126-151453	4	Screw M6 x 35	19	8429092	1	Demist Hose 51mm x 140
4	7-951-150210	4	Spring Washer M6	20	7-926-001611	1	Shut Off Valve
5	7-661-150003	4	Nut M6	21	6-450-990121	1	Flange Pipe Assy
6	6-200-060808	4	Bushing	22	6-450-990120	1	Flange Plate
7	7-246-000944	1	Cable Push/Pull	23	6-450-990118	1	Flange Pipe
8	7-934-990007	1	Vent Circular	24	7-790-100821	3	Screw No. 8 x ½"Lg
9	6-450-990116	1	Flange Pipe Assy	25	7-445-080853	1	Elbow ½" x ½"
10	7-792-151211	14	S/Tap Screw M6x12	26	7-445-120850	1	Hex Reducing Bushing
11	7085202	8	Clip Worm 51-70				+ See further breakdown in this group
12	7085101	6	Clip Hose 19to25mm				
13	102997	2	Cable Clips				
14	7-312-990115	25	Cable Tie				
15	8-596-962250	1	Hose ¾"				
16	7-543-990320	1	Hose Insulation 22mm Bore x 800cm				

6-515-990149
Issue No. 01